

BACKUP

We know  
the drill.



# *Spectrum* *gold PLUS*

**Minimizes Burring** – by providing a flat, hard surface for maximum support

**Increases Hole Quality** – premium quality materials that will not contaminate the hole wall

**Reduces Drilling Temperatures** –resulting in reduced drill wear and minimized heat related hole defects

**Return on Investment** –effectively combined with LCOA's entry materials reduces the need for expensive deburring and hole cleaning procedures

**Guarantee** – Behind every LCOA product stands the LCOA guarantee: Any LCOA product proven defective will be replaced or refunded

**L.C.O.A.**<sup>®</sup>  
LAMINATING COMPANY OF AMERICA

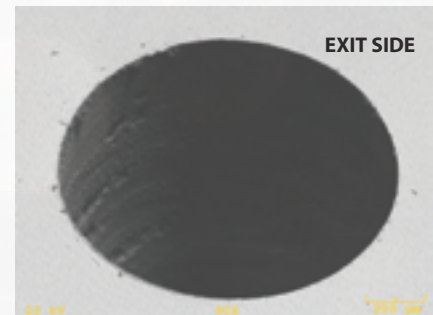
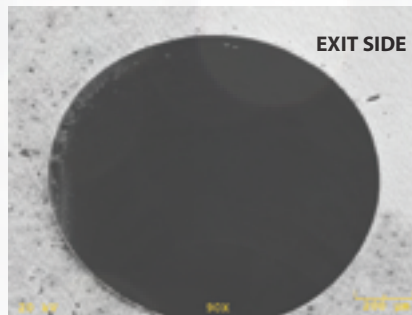
# Spectrum gold PLUS

## The Superior Backup Material

Spectrum Gold Plus backup is a combination of our proprietary non-contaminating, non-abrasive “texol” coated cellulose covering laminated to both sides of our premium quality low resin wood core. Spectrum Gold Plus has been specifically designed for the Printed Circuit Board industry to allow higher yields and a more cost effective drilling operation. Spectrum Gold Plus offers a wide range of special features that benefit the LCOA user.

### BURR COMPARISONS

Material: Hi Tg Lead Free  
(2-sided Cu: 35/35  $\mu$ m)  
Stack: 2-high  
Panel Thickness: 1.60mm  
Entry: 0.18mm aluminum  
Backup: Standard backup  
*Spectrum Gold PLUS*  
Drill Diameter: 0.25mm  
MAX: 3,000 hits  
In-Feed: 125 ipm  
Chipload: 0.71 inch/rev  
RPM: 175,000 (450 SFM)  
Retract: 800 ipm



### TECHNICAL DATA

THICKNESS:	0.095" $\pm$ 0.005"	(2.41mm $\pm$ 0.13mm)
CUT TOLERANCE	$\pm$ 0.0625"	( $\pm$ 1.6mm)
SIZES	Most panel and sheet sizes available. Consult your local distributor of contact LCOA for additional information.	

### QUALITY CONTROL

The consistently high-quality of LCOA Spectrum Gold Plus is guaranteed by the tightest production tolerances in conjunction with permanent product controls corresponding to ISO 9001.

### STORAGE

LCOA Spectrum Gold Plus should remain sealed in its original packing until use. It should be stored under the same temperature and humidity conditions that surround the working area. Rapid change of these conditions will cause moisture fall out resulting in subsequent warp.

Best storage at: 65° - 75°F (18° - 24°C)  
<55% rH