

BACKUP

**We know
the drill.**



MAJOR ADVANTAGES:

- Reduced hole wall roughness
- Surface hardness of 80 shore "D"
- Reduced drill wear
- Lubricated drilling for lower temperature

INCREDIBLE PERFORMANCE ON NEXT GEN PCBs.

SLICKBACK™
MAX LUBRICATED BACKUP

- **Reduces Drilling Temperatures** – SLICKBACK™ MAX's lubricating properties significantly lower drilling temperatures minimizing heat-related hole defects and drill wear.
- **Improves Hole Quality** – SLICKBACK™ MAX's lubricating properties substantially reduce hole roughness and drill wear.
- **Hard Surface** – SLICKBACK™ MAX's surface hardness of 80 shore "D" to eliminate exit burrs.
- **Return on Investment** – SLICKBACK™ MAX, used in tandem with LCOA's entry materials, permits increased stack heights while maintaining acceptable hole quality.
- **Guarantee** – Behind every LCOA product stands the LCOA guarantee: Any LCOA product proven defective will be replaced or refunded.

LCOA™



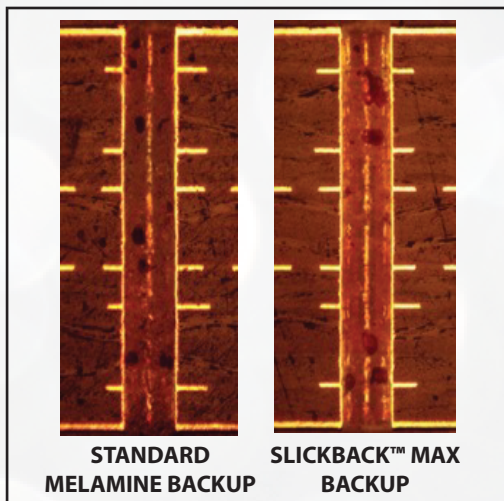
An Acrylic Coated Laminate

LCOA SLICKBACK™ MAX is a unique, revolutionary backup material that offers the user advanced drilling performance. SLICKBACK™ MAX is a combination of our proprietary, non-contaminating, acrylic coated paper laminated to both sides of a premium quality wood core. The special bonding agent is formulated with lubricating properties that reduce friction on the hole wall, lower drilling temperatures, and minimize drill wear. The bonding agent is designed to be water-soluble allowing any residue to be easily removed by normal rinse procedures. SLICKBACK™ MAX offers a wide range of advanced features that benefit the LCOA user.

HOLE COMPARISON

Quality Inspection (Hole wall quality):

SlickBack™ MAX demonstrates excellent overall drilling quality, with minimal roughness.



CONDITIONS

- Material: Hi Tg Lead Free (8-layer Cu: 1/2oz)
- Stack: 2-high (top panel)
- Panel Thickness: 0.065"
- Entry: Bullseye™ Xtreme
- Drill Diameter: 0.0098"
- In-Feed: 105 IPM
- Chipload: 0.70 (mils per rev)
- RPM: 150,000 (375 SFM)
- Retract: 800 IPM

SPECIFICATIONS

- Thickness: 0.098" \pm 0.005"
- Quality Control

The consistent high quality of LCOA SlickBack™ MAX is guaranteed by the tightest production tolerances in conjunction with permanent production controls corresponding to ISO-9001.
- Storage

LCOA SlickBack™ MAX should remain in its original packing until use. It should be stored under the same temperature and humidity conditions that surround the working area.
- Best storage at:: 18° - 24°C < 50% rH
- 1 year shelf life (minimum)